

Aqua Marine Floating Fountains

AQF3000 -AQF15000



 info@halfoffponds.com

 www.halfoffponds.com

 866-831-6558

Nozzles and Spray Patterns

Spray Patterns for all Aqua Marine Fountains



Standard Deflector



Deflector



7 w/ Plug



7 w/o Plug



Tulip



Geyser



9 w/ Plug



9 w/o Plug



Live Oak

How to Insert Plug into Arch Nozzles

Plug -----

1. 

2. 

Plug seated in center nozzle

1. Insert plug into center nozzle
2. Seat plug into center nozzle

Additional Nozzles for 10,000-15,000 GPH Fountains



Additional Nozzle for 15,000 GPH Fountain



Fittings and Assembly

FOUNTAIN PUMP AND FLOAT ASSEMBLY KIT:

1. Float Size and Shape May Vary
2. Nozzle Quick-Release
3. Fountain Nozzles
4. Hub Adapter
5. 2 Pieces Float Flange
6. Fountain Nozzle Hub
7. 25' Mooring Rope x2
8. Operation Manual
9. Aqua Pulse Pump
10. 4 Pieces M8 1" Machine Screws
11. 1 Plastic Locking Screw
12. 1.5" x 1.5" Female Adapter
13. 1.5" x 2" Male Adapter x2



REVIEW COMPONENTS

FIG 1 FOUNTAIN ASSEMBLY



Scan QR
code for
assembly
instructions.

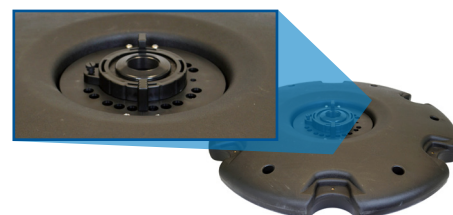
*Float appearance/
size may vary



1. Slide the 2 Flange halves around the hub
2. Lift Float and attach it to the hub using the 4 M8 1" Screws provided



1. Center Hub Adapter in Fountain Nozzle Hub
2. Attach Nozzle Quick-Release over the Hub Adapter and twist to lock
3. Install the Plastic Locking Screw to the Quick-Release to Float Flange



ATTACH ADAPTERS TO YOUR AQUA PULSE WATER PUMP



AQF3000: Connect all 4 of the the pictured fittings to your pump.



AQF5200-8000: Connect 3" Male x 4" Female to 2" Female by 3" Female fittings to your pump.



AQF10000-12500: Connect 3" Male x 4" Female fitting to your pump.



AQF15000: Connect Fountain Nozzle Hub and float directly to the pump.



Connect Assembled Float to Monsoon Pump, turn clock-wise until snug (careful not to cross thread)

COLOR CHANGING LIGHTS WITH CONTROLLER



Our RGB LED Light kits come in 3 or 9 watts. They are available in standard white or remote color-changing, with a 100' or 200' power cord option. Lighting kits include a remote which allows you to select solid colors or color patterns, a photo cell which turns the unit on automatically at night and off during daylight hours.

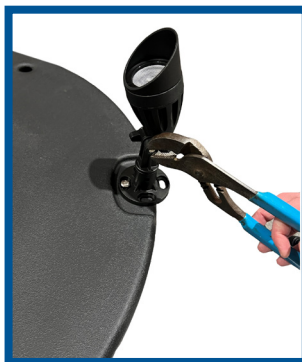
Attaching Lights



INSTALLING OPTIONAL IGNITE FOUNTAIN LIGHTING KIT



1. Attach the light clips to the float. Do not overtighten as this can crack the float.

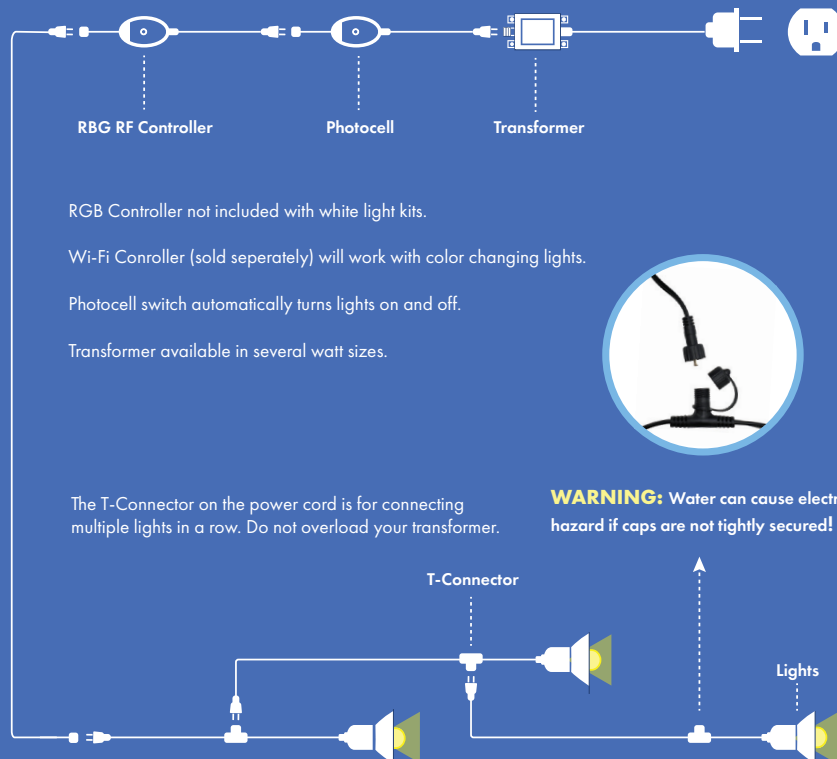


2. Attach the LED lights to the light clips. Aim the lights toward the fountain display



3. Read and follow the instructions included with the fountain light kit.

INSTALLING OPTIONAL IGNITE FOUNTAIN LIGHTING KIT



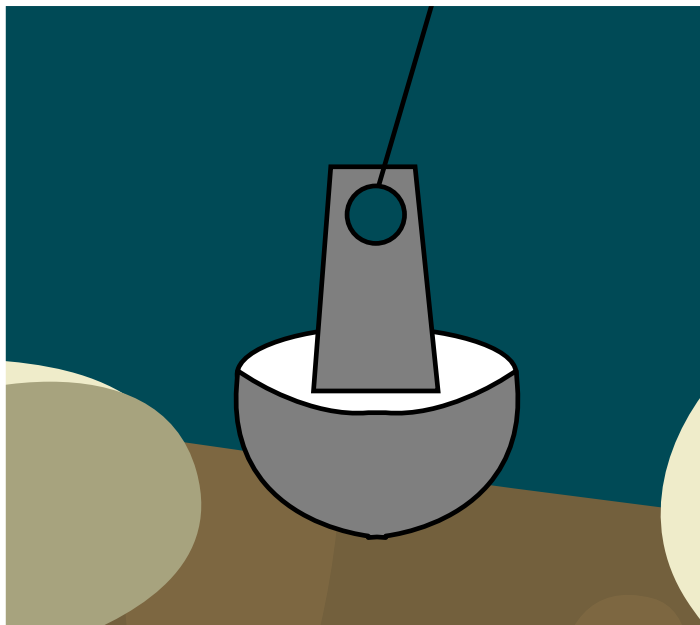
Attach mooring ropes and secure to anchors or weights. Place the anchors gently into the pond at opposite edges of the float. Set one anchor near the edge of the pond to make it easier to retrieve the fountain for servicing. Be sure to not use sharp rocks, as they can damage your liner. Make sure the ropes are secured to the float.

Important: Always retrieve the fountain using mooring ropes. Never retrieve with the power cord.

Position the floating fountain in the desired location and set the anchors. To keep fountain stationary, place the anchors 2' – 4' away from fountain for every foot of pond depth.



1. Securely attach mooring ropes to the fountain float. We recommend using a carabiner to make fountain-removal simple. After unhooking fountain, you can clip to a float so that you can easily find the mooring rope for reinstallation.



2. Use mushroom anchors or concrete blocks to hold the fountain in position. You can also use stakes to secure lines closer to the pond edge so that a boat is not needed for fountain service.



Position the floating fountain in the desired location and set the anchors. To keep fountain stationary, place the anchors 2' – 4' away from fountain for every foot of pond depth.

WARRANTY

These products, distributed by Half Off Ponds are warranted to the original user only to be free of defects in material and workmanship for a period of 24 months from the date of purchase, but not more than 30 months from the date of manufacture. Half Off Ponds's liability under this warranty shall be limited to repairing or replacing, at Half Off Ponds' discretion, without charge, F.O.B. Half Off Ponds will not be liable for any cost of removal, installation, transportation, or other charges which may arise related to a warranty claim.

FOUNTAIN MODELS

AQF3000

AQF5200

AQF6100

AQF8000

AQF10000

AQF12500

AQF15000

Reference the pump manual and light manual for warranty details on products.

To obtain service under this warranty, the defective product must be returned to Half Off Ponds together with proof of purchase and installation date, failure date, and supporting installation data. Any defective product to be returned to Half Off Ponds or a service center must be sent freight prepaid: documentation supporting the warranty claim and/or an Authorized Warranty Return (AWR) must be included if instructed. In the absence of suitable proof of purchase date, the effective date of this warranty will be based upon the date of manufacture.

Any replacement product may be either new or like-new, provided it has functionality at least equal to that of the product being replaced. No requests for service under this warranty will be accepted if received more than 30 days after the term of the warranty. Correction of defects, in the manner and for the duration of the warranty described in this warranty, shall constitute complete fulfillment of all liabilities and responsibilities of Half Off Ponds to the user with respect to the product, and shall constitute full satisfaction of all claims, whether based on contract, negligence, strict liability or otherwise. Except for the obligations specifically set forth in this warranty, in no event shall Half Off Ponds be liable for direct, indirect, special, incidental, or consequential damages, whether based on contract, tort, or any other legal theory and whether advised of the possibility of such damages.

Half Off Ponds reserves the right to change or improve its products or any portions thereof without being obligated to provide such a change or improvement for units sold and/or shipped prior to such a change or improvement.

THERE ARE NO EXPRESS OR IMPLIED WARRANTIES, INCLUDING MERCHANTABILITY OR FITNESS FOR A PARTICULAR PURPOSE, WHICH EXTEND BEYOND THOSE WARRANTIES DESCRIBED OR REFERRED TO ABOVE EXCEPT AS EXPRESSLY HERIN PROVIDED THE GOODS ARE SOLD "AS IS", THE ENTIRE RISK AS TO QUALITY AND FITNESS FOR A PARTICULAR PURPOSE, AND PERFORMANCE OF THE GOODS IS WITH THE BUYER, AND SHOULD THE GOODS PROVE DEFECTIVE FOLLOWING THEIR PURCHASE, THE BUYER AND NOT THE MANUFACTURER, DISTRIBUTOR, OR RETAILER ASSUMES THE ENTIRE RISK OF ALL NECESSARY SERVICING AND REPAIR.



Visit Us at www.halfoffponds.com

Customer Support
info@halfoffponds.com
1-866-831-6558



Scan QR code
for assembly
instructions and
more information.